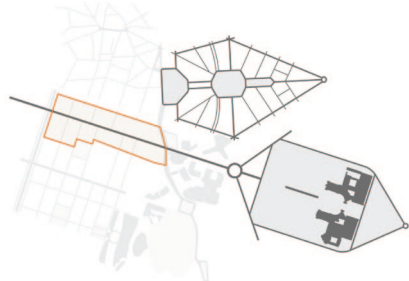




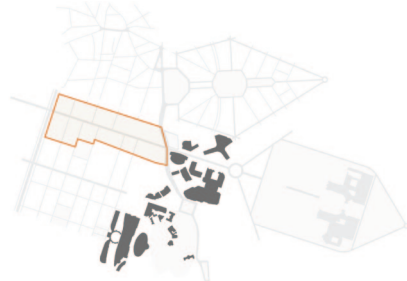
view 1 View along transformed Rue de la Loi opposite new EU conference centre



Formal grid vs organic structure



Grand axes



Objects



Maelbeek valley



Connections from North to South



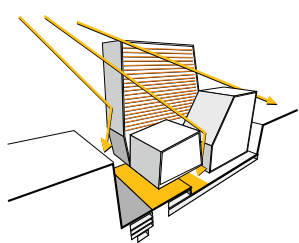
Relationship to EC institutions



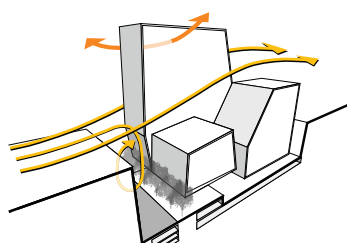
Buildings in fabric, objects in landscape



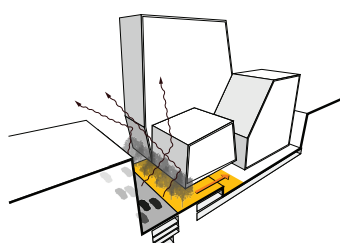
Public realm along the Rue de la Loi



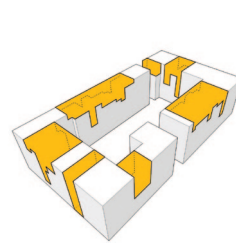
Sunlight into public space



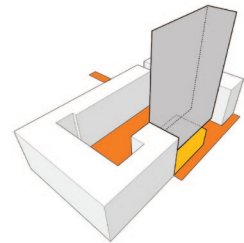
Wind and air to clean the street



Protection from noise



Consolidating the block



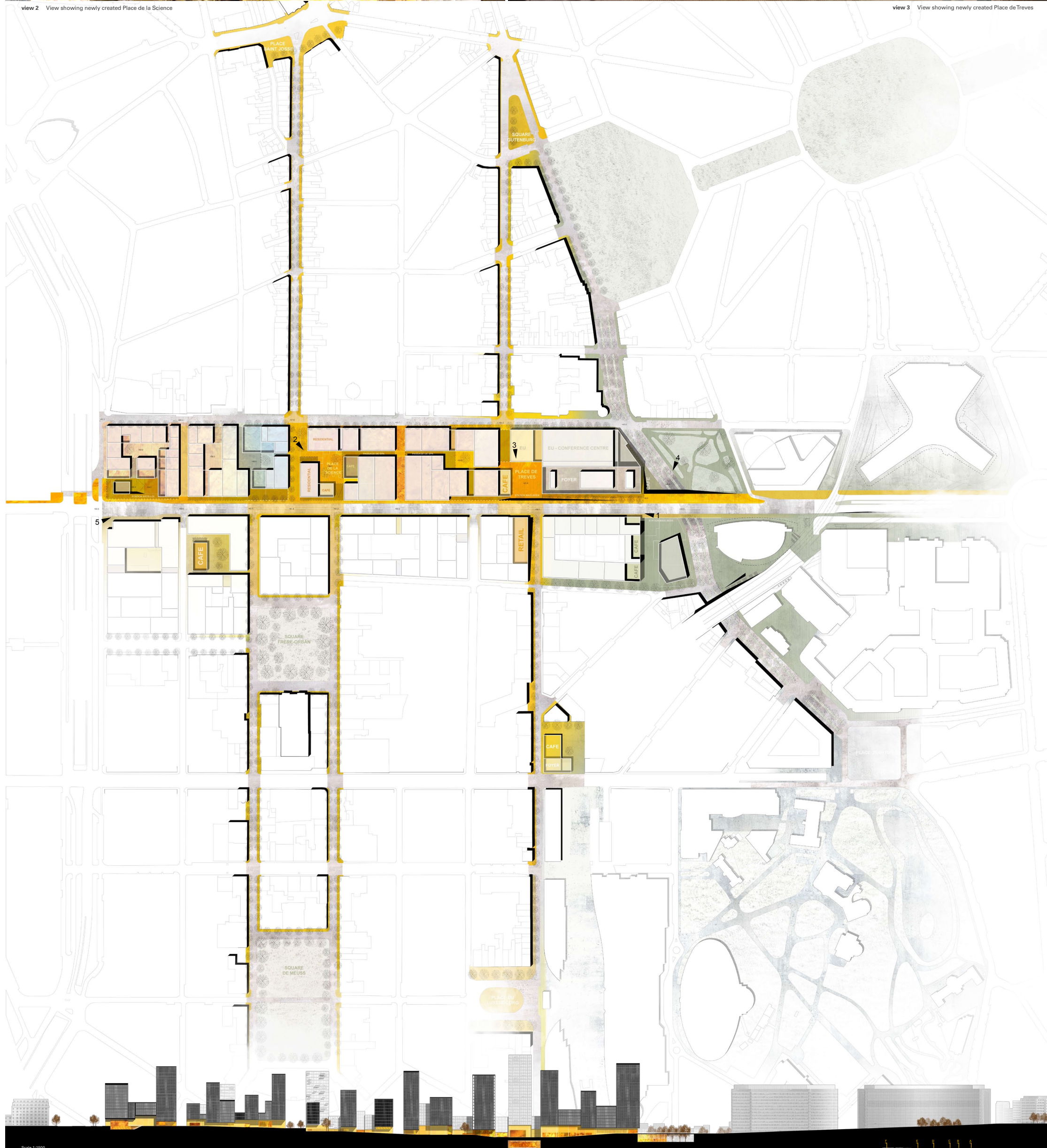
Intensification of public realm



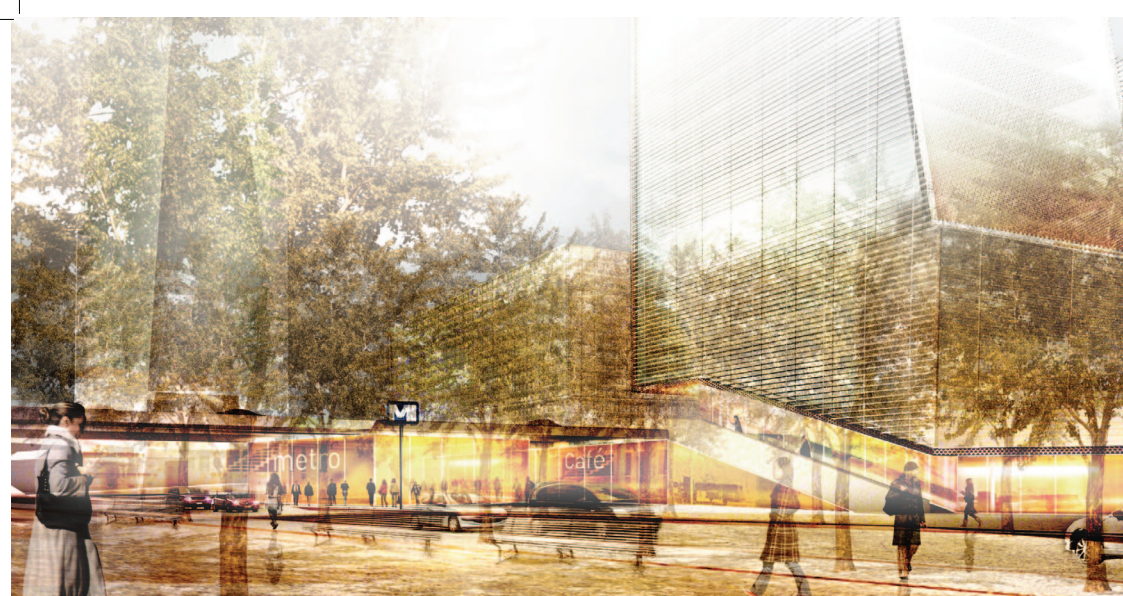
view 2 View showing newly created Place de la Science



view 3 View showing newly created Place de Treves



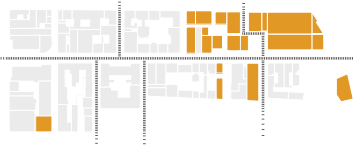
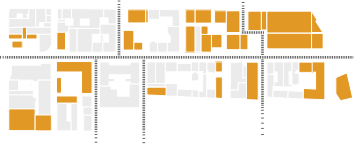
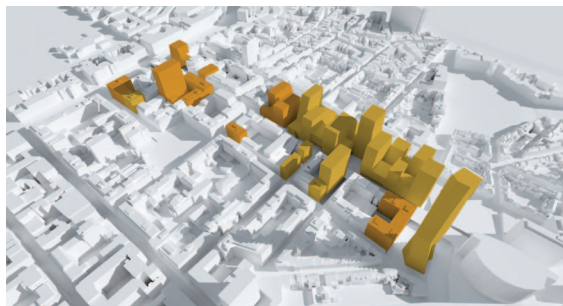
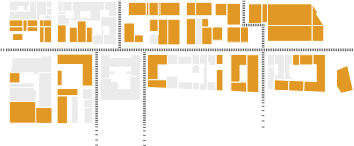
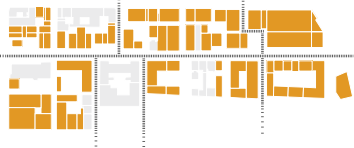
Scale 1:1500



view 4 View from Chaussee d'Etterbeek towards new transport interchange



view 5 View from western end of site at Station Arts-Loi

[0] 535.700 m²[1] +179.200 m²[2] +70.600 m²[3] +60.000 m²[4] +42.900 m²[5] +42.200 m²(Total) 886.600 m²

Below ground



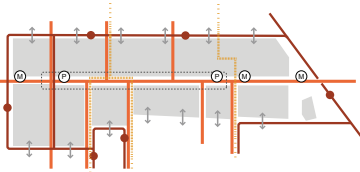
Public level (0-2)



Urban fabric (2-8)



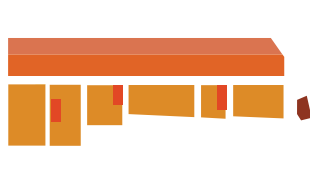
"Books" (8+)



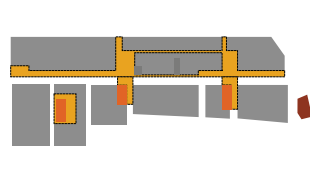
Access



Land use



Height regulation



Implementation of public realm



Bus

Cars

Pedestrians

Site access

Parking

Metro



Office EC

Office

Residential

Retail/Facilities



20% Tall

50% Tall

9-10 Storeys

Tall

Landmark



Public realm

Intensification

Object